

RAPHAEL GÄRTIG

EIN MUSIKALISCHER SCHERZ
IN FÜNF KLEINEN TEILEN
FÜR KLAVIER SOLO

(FEBRUAR 2002)

Raploch Götting
Ulrich 2008

PRÄLUDIUM

= HOMMAGE AN S. =

mäßig schnell

f *p* *mf*

8va

f *mf* *f*

marcato

f *f* *f*

8va

8va

8va

, Pizzicato ≈

Pause

für

schwebendes KLAVIER

allein

VON

Raphael Gärtig

13. OKTOBER

1999

facile

The image shows a page of musical notation. At the top left, there is a treble clef and a 9-measure rest. The word "facile" is written above the staff. The rest of the page is filled with large, decorative, calligraphic flourishes that resemble musical notes or ornaments. A vertical line with a starburst at the top is positioned on the right side. The flourishes include a large spiral on the left, a wavy line that curves across the middle, and a vertical line with a starburst at the top. There are also several smaller spirals and wavy lines scattered throughout the page.

Raphael Gärting
Februar 02002

INTERLUDIUM

≡ VARIATION ÜBER VIVA LA MUSICA! ≡

$\text{♩} = 60$

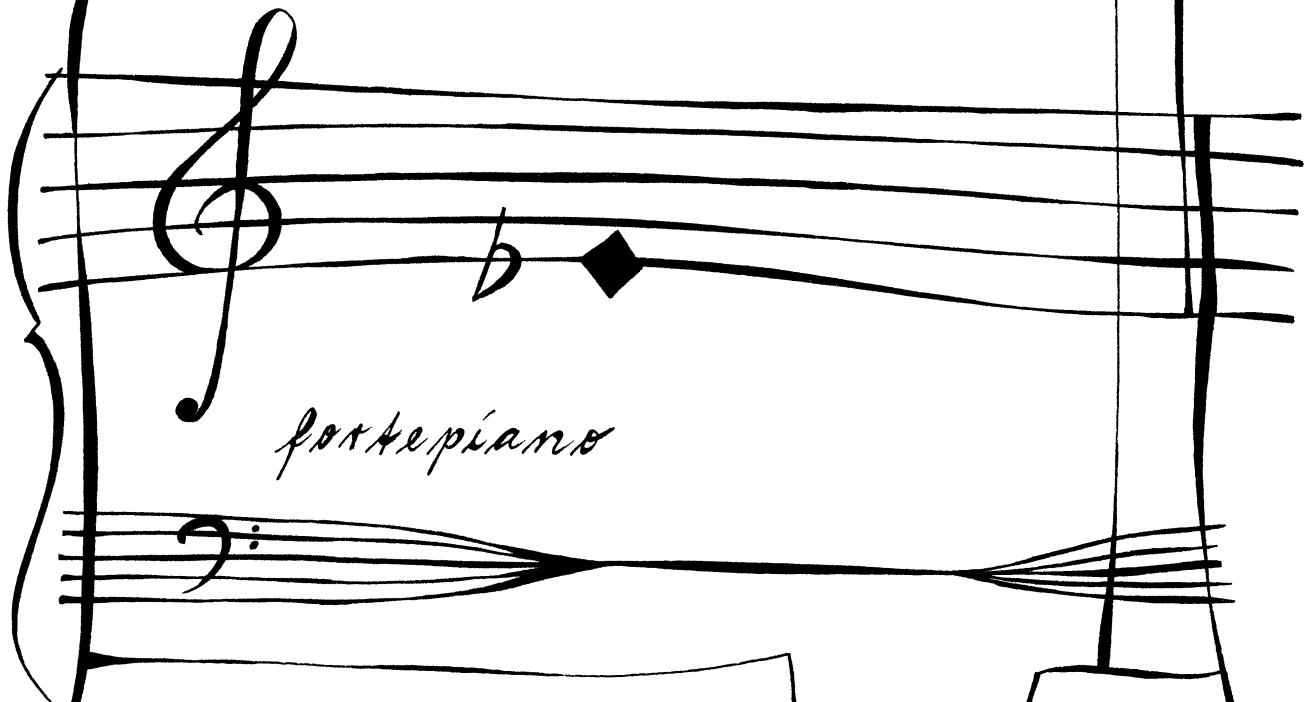
Handwritten musical notation for the first system. It consists of a grand staff with a treble clef on the upper staff and a bass clef on the lower staff. The time signature is 2/4. The first measure contains a melody in the treble clef starting on G4, moving up to A4, B4, and C5, with a dynamic marking of *mf*. The bass clef accompaniment consists of a bass line starting on G3, moving up to A3, B3, and C4. The second measure continues the melody in the treble clef, ending on a sharp sign (F#4). The bass clef accompaniment continues with a bass line starting on G3, moving up to A3, B3, and C4. The third measure features a chord in the treble clef with notes Bb4, A4, and G4, and a dynamic marking of *mp*. The bass clef accompaniment features a chord with notes G3, F#3, and E3. The system ends with a double bar line.

Handwritten musical notation for the second system. It consists of a grand staff with a treble clef on the upper staff and a bass clef on the lower staff. The time signature is 2/4. The first measure contains a melody in the treble clef starting on G4, moving up to A4, B4, and C5, with a dynamic marking of *mf*. The bass clef accompaniment consists of a bass line starting on G3, moving up to A3, B3, and C4. The second measure continues the melody in the treble clef, ending on a sharp sign (F#4). The bass clef accompaniment continues with a bass line starting on G3, moving up to A3, B3, and C4. The system ends with a double bar line.

Handwritten musical notation for the third system. It consists of a grand staff with a treble clef on the upper staff and a bass clef on the lower staff. The time signature is 2/4. The first measure contains a melody in the treble clef starting on G4, moving up to A4, B4, and C5. The bass clef accompaniment consists of a bass line starting on G3, moving up to A3, B3, and C4. The second measure continues the melody in the treble clef, ending on a sharp sign (F#4). The bass clef accompaniment continues with a bass line starting on G3, moving up to A3, B3, and C4. The system ends with a double bar line.

einen Es ^{eins}

für Pianoforte



Dauer: für eine Sekunde .

Raphael Gärtig
Jan / Feb 2002

Raphael Gering
Winter 02/002

POSTLUDIUM

= SCHLUSSAKKORD =

mit Musizierwillen

mp

fine